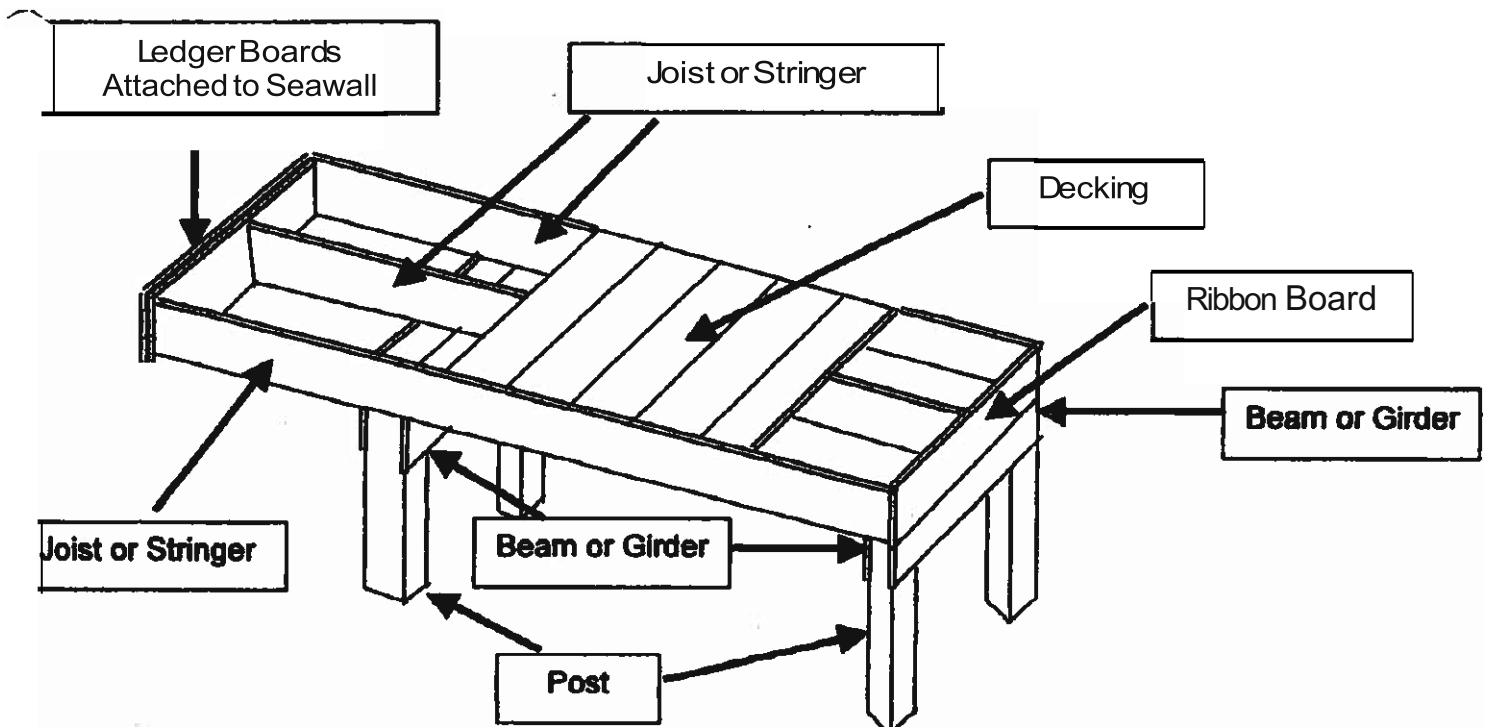


FLHPOA PIER SPECIFICATIONS

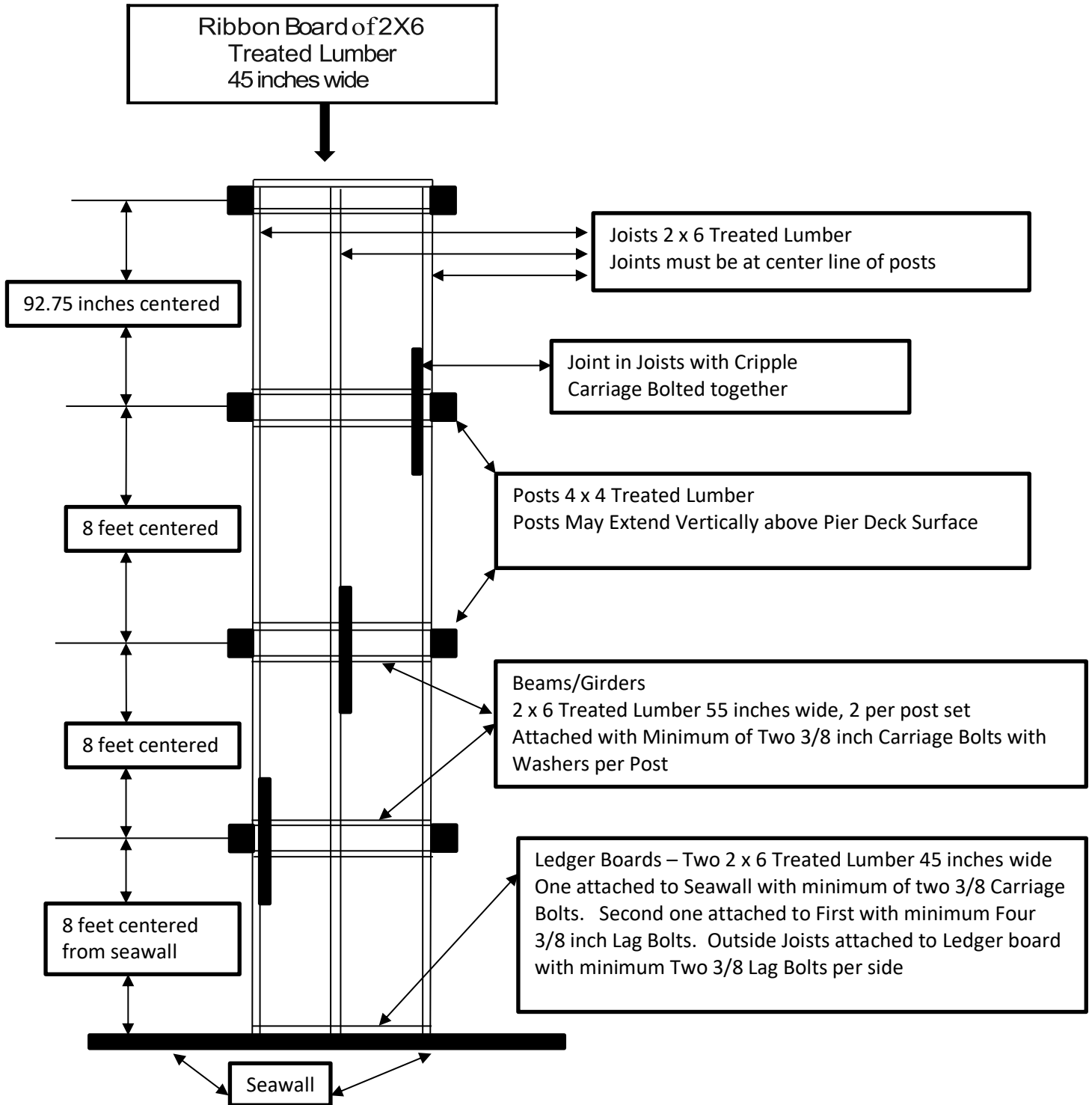
Useful Terms

- **Beam/Girder.** A support member of a deck floor framing system which rests upon the piers. The girder is in a position parallel to the ledger and supports the opposite end of the joists. Attached to the posts with carriage bolts, washers and nuts.
- **HDG(Hot dipped galvanized).** A rustproof coated metal which is less expensive than aluminum or stainless steel.
- **Joists/Stringers.** A system of floor framing commonly using 2 x 6 or 2 x 8 lumber. Positioned on top of Beams/Girders Decking is attached to top of Joists/Stringers
- **Ledger.** A board of the same size as the joists, attached to Seawall, to which the joists are perpendicularly attached.
- **Decking.** Boards attached to the top of the Joists/Stringers. (top surface of pier)
- **Posts.** Boards sunk vertically into bottom of harbor. Support all of pier.
- **Cripple.** Board used to strengthen joint between two boards. Spans across joint and is attached to both boards.



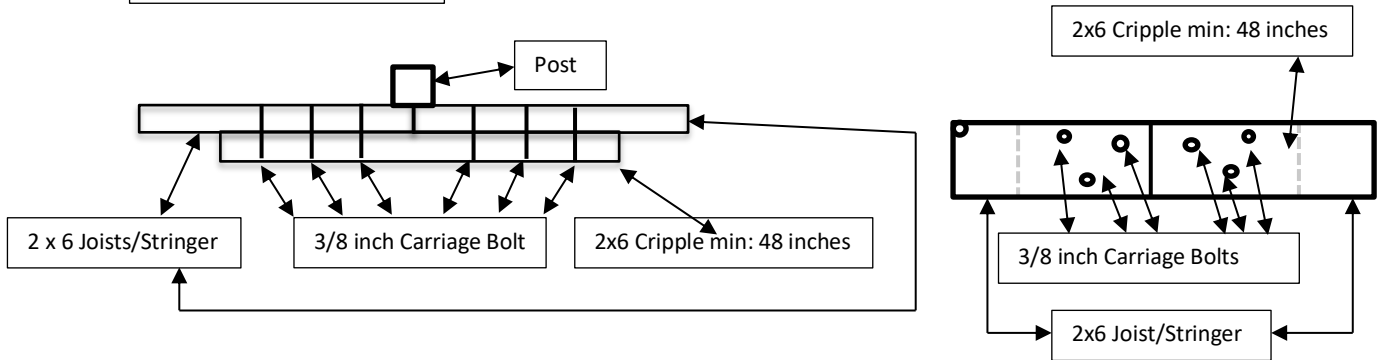
Pier Framing
Illustrative for Component Names Pier Specifications
on
Following Pages

FLHPOA PIER SPECIFICATIONS

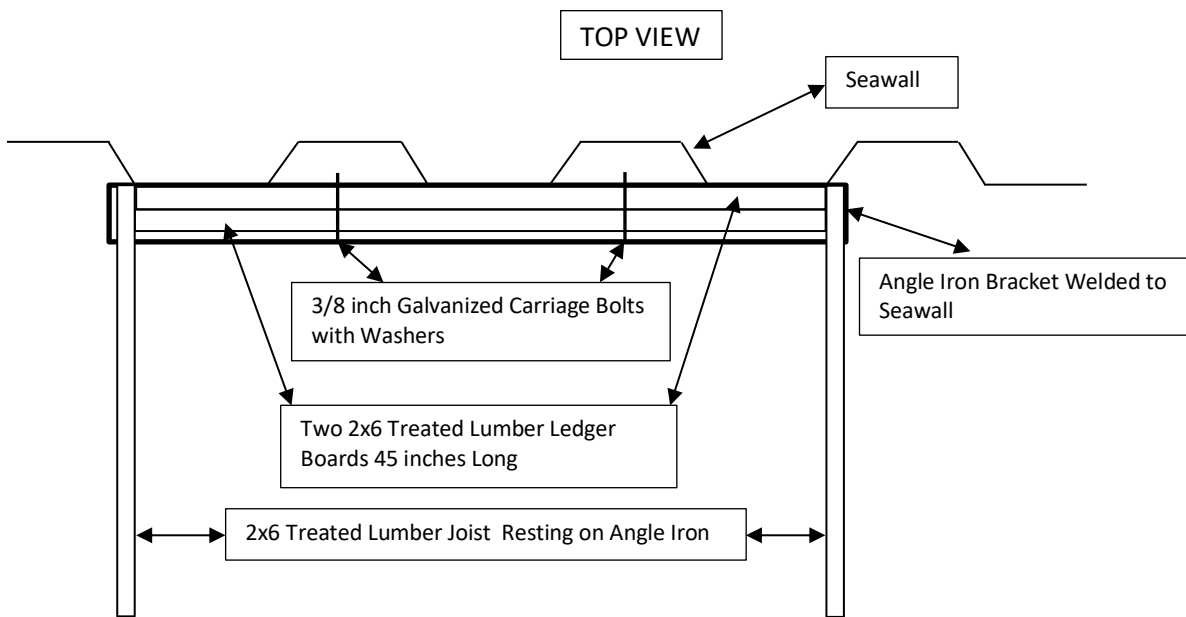
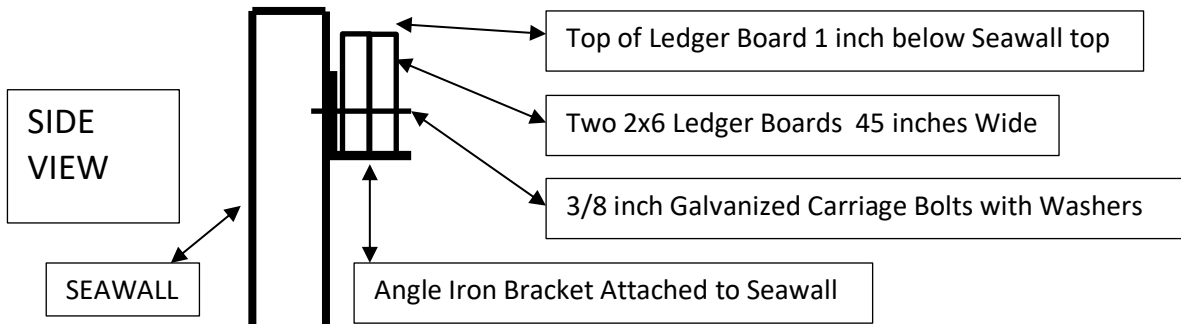


Joint Between Joists

FLHPOA PIER SPECIFICATIONS



Seawall and Ledger Board Attachment



FLHPOA PIER SPECIFICATION

Beams/Girders must be attached to each post with Two 3/8 inch carriage bolts and washers
All hardware must be Zinc coated or better

All exposed surfaces of pier must be painted white in color

Maximum distance between posts is 8 feet on center. Posts are 4x4 treated lumber

32 feet maximum overall length

Beam/Girder 2x6 treated lumber

Joist/Stringer 2x6 treated lumber

Ledger Boards Two 2x6 45 inches wide treated lumber

Decking:
5/4 treated decking
48 inches wide
Max space between boards is 5/8 inch
Must be attached with a minimum length of 2 1/2 inch Zinc coated or Anodized Deck screws

All joints between joists must have a 4 foot 2x5 treated lumber Cripple spanning joint and be attached with a minimum of Six 3/8 inch carriage bolts and washers

Ledger Boards must be permanently attached to seawall with a minimum of Two 3/8 inch carriage bolts and washers

